

Login

Login Name

Password

Login

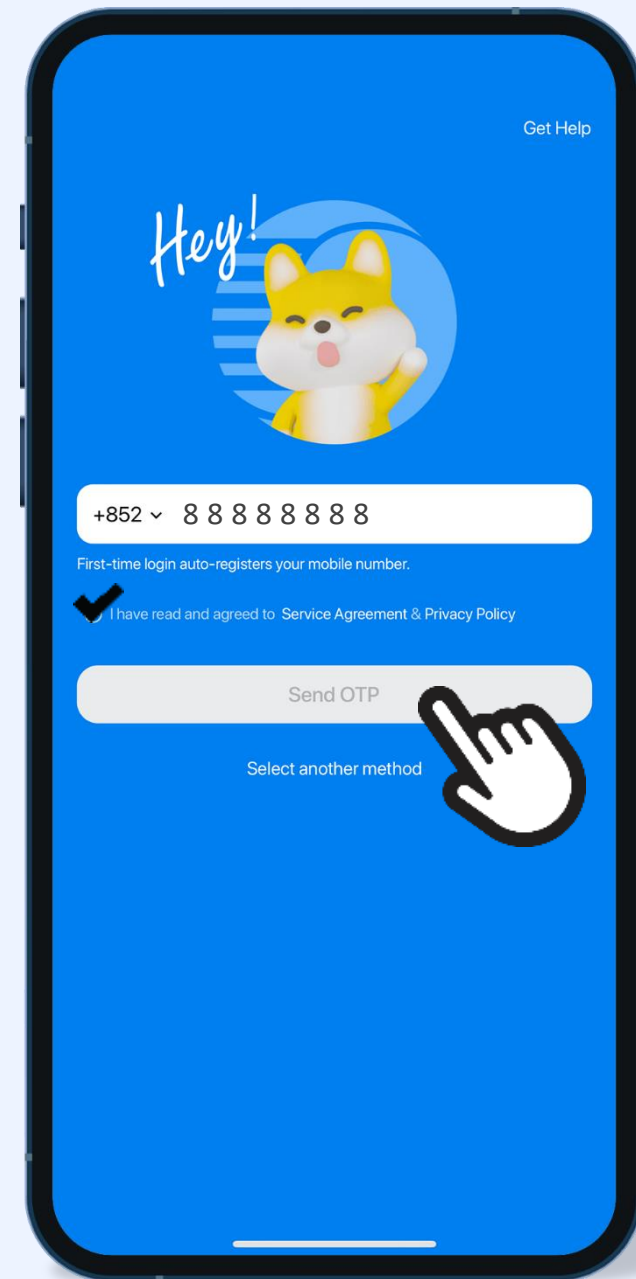
"Shen Yiying" App  
Login Device Binding Tutorial



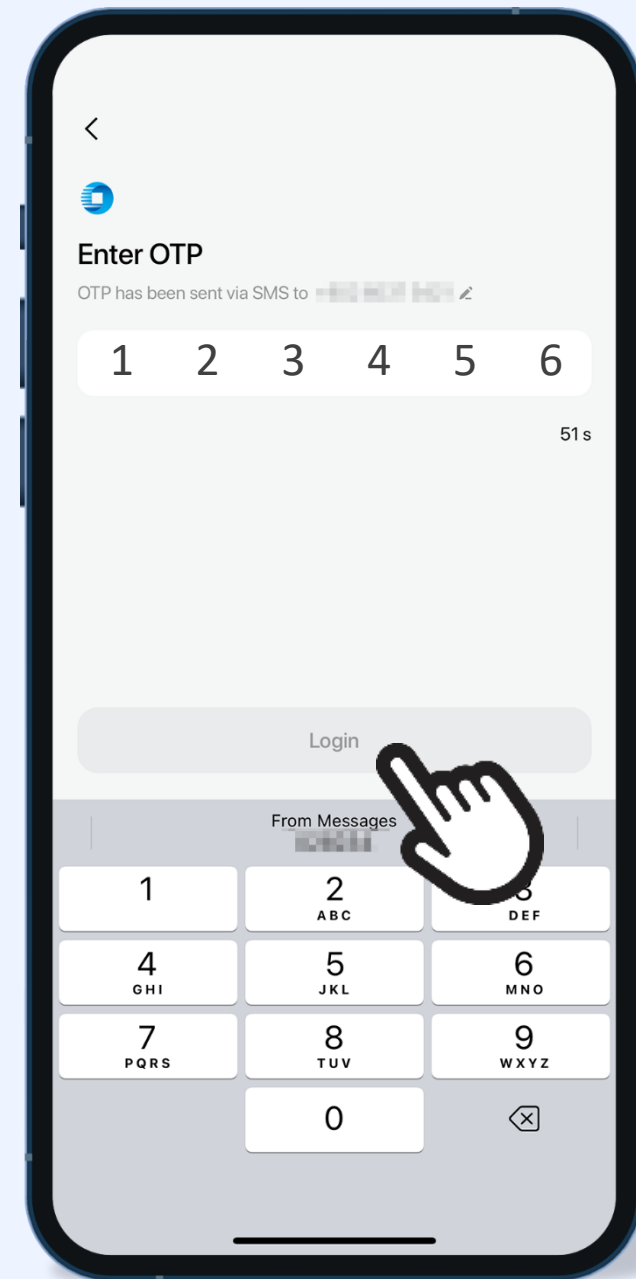
## Step 1: User Login Binding

1. Enter mobile phone number;
2. Read carefully the "Service Agreement & Privacy Policy" and tick agree;
3. Click "Send OTP";

> Login Binding

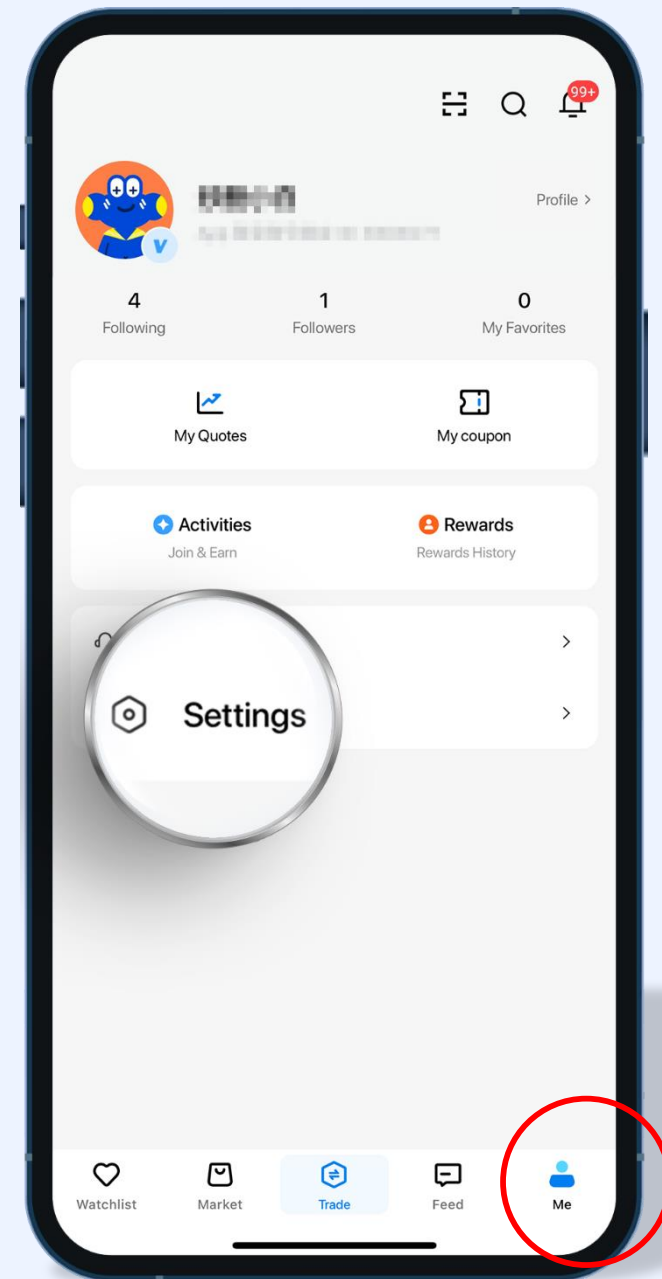


4. Enter the six-digit verification code received and click "Login";

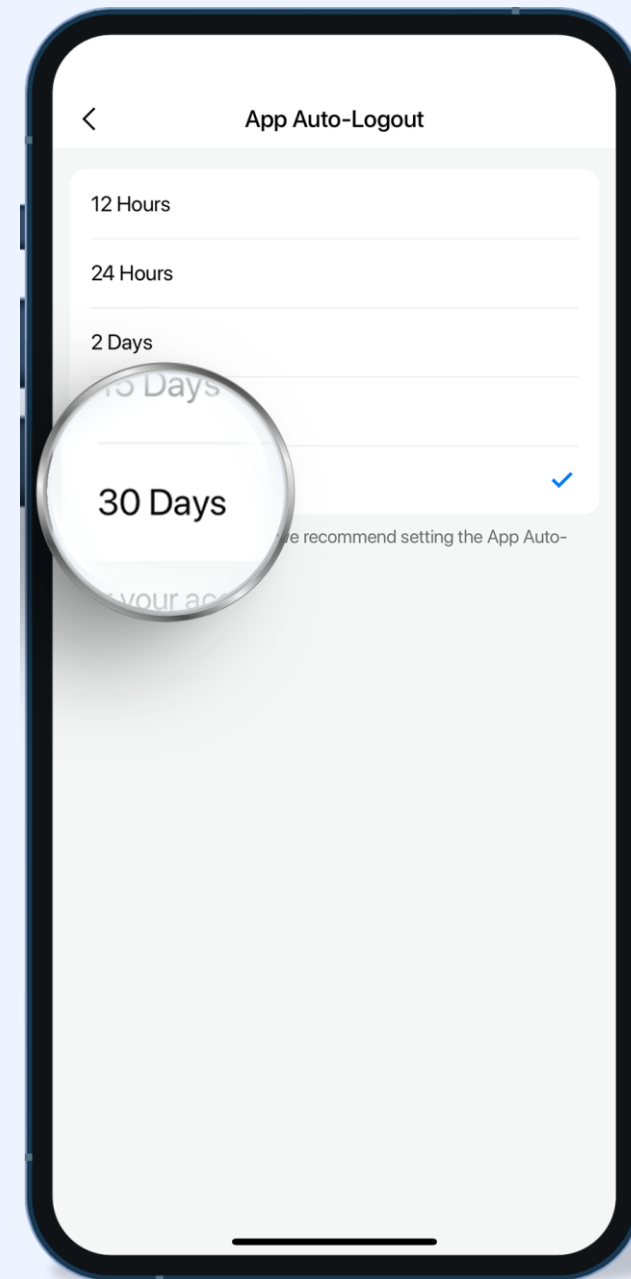


After registration, user can set the valid duration of App login through the following path:  
At "Me" page, click "Settings",  
and select "App Login & Security";

> Login Binding



At "App Login & Security",  
click "App Auto-Logout", can  
choose a max. of 30 days App  
login period.

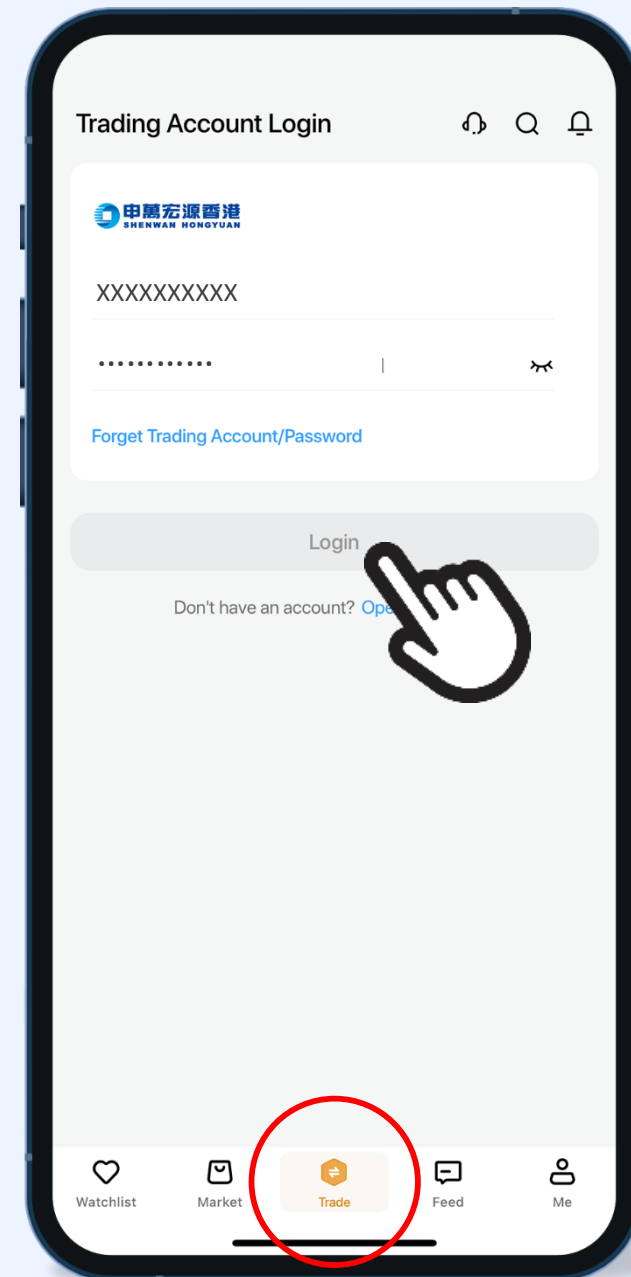


## Step 2: Trading Account Login Binding

### Trade Page

✕ Enter Login Name + Trade Password,  
click "Login";

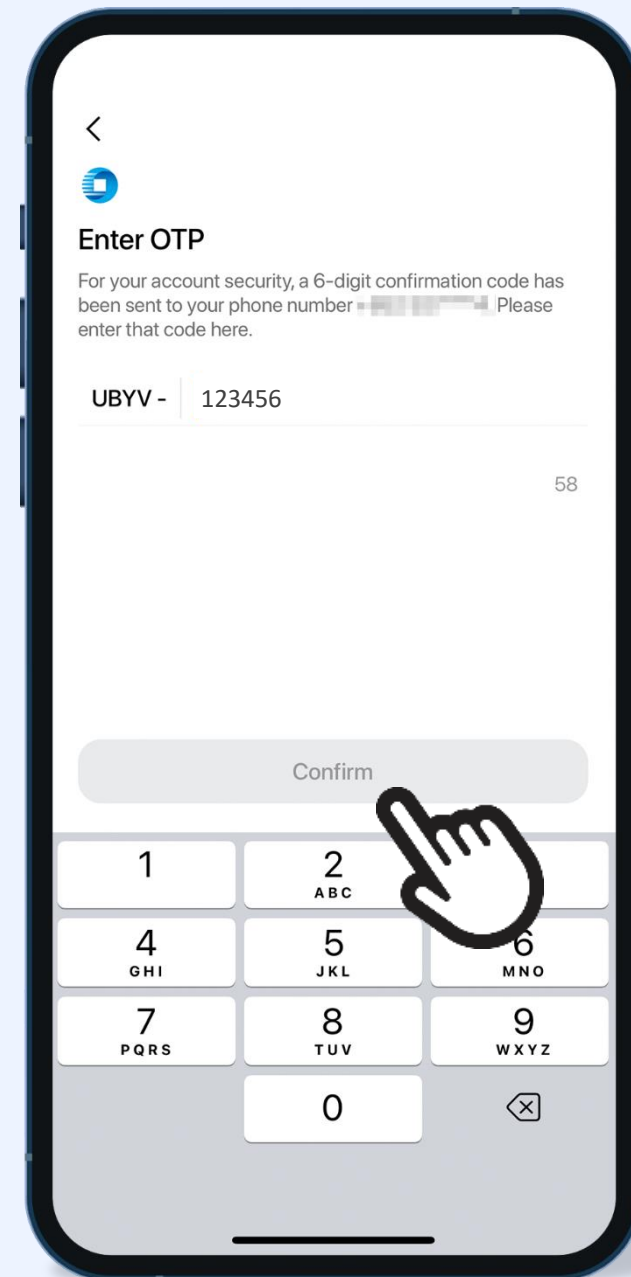
> Device Binding



## Trade Page

✂ Two-factor authentication: please enter the one-time-password, click "Confirm" to start trading.

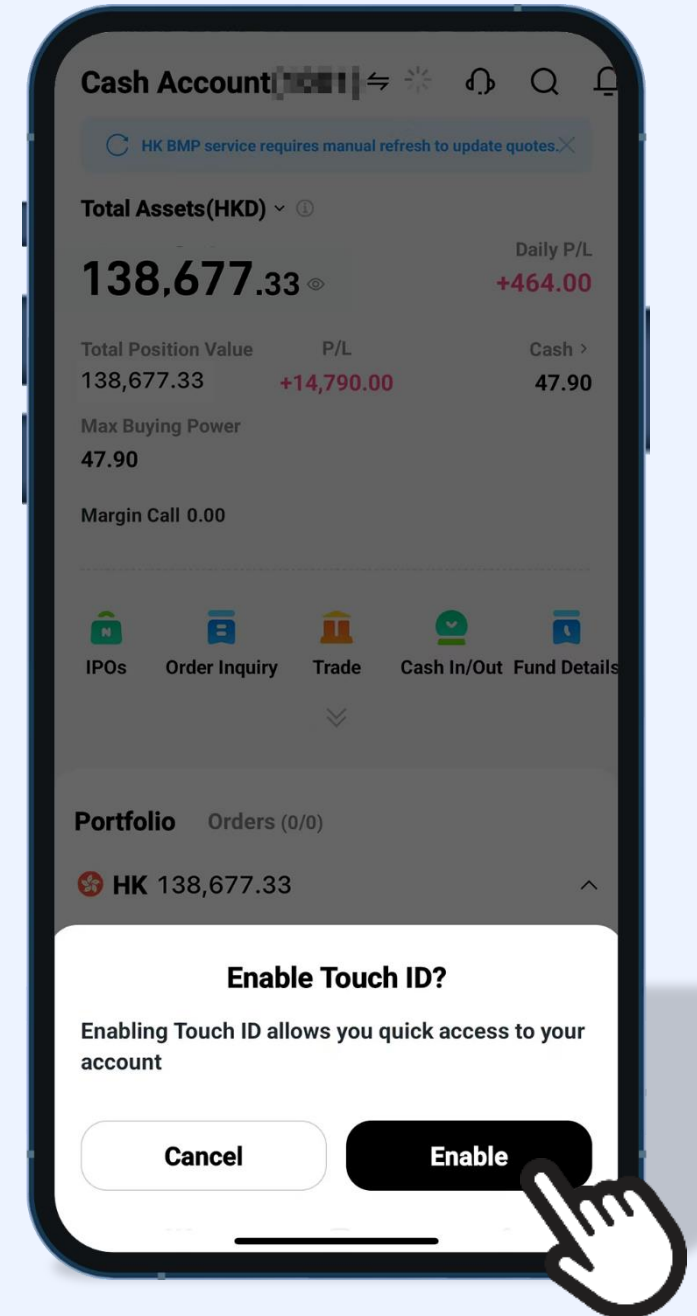
> Device Binding



## Trade Page

※ System will prompt “Enable Face ID” or “Enable Touch ID” authentication option, click “Enable” if required.

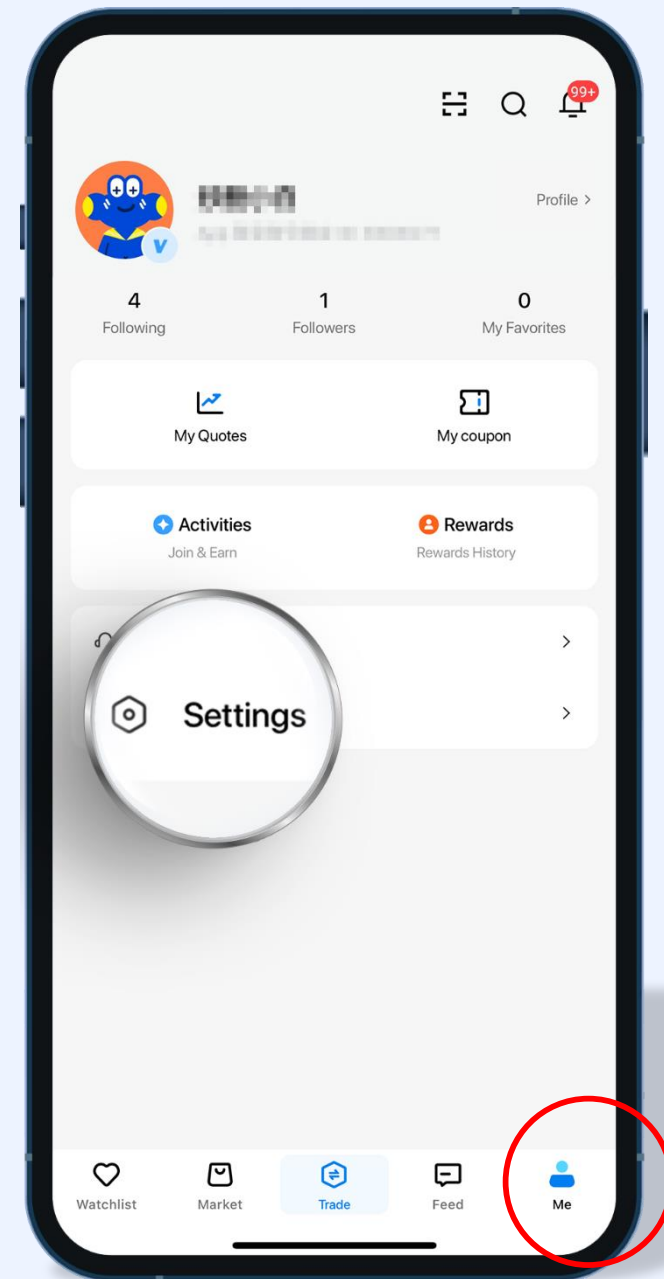
> Device Binding



## Me Page

✂ If user has not enabled "Face ID" or "Touch ID" at the setup, can go to "Me" page and click "Settings" icon;

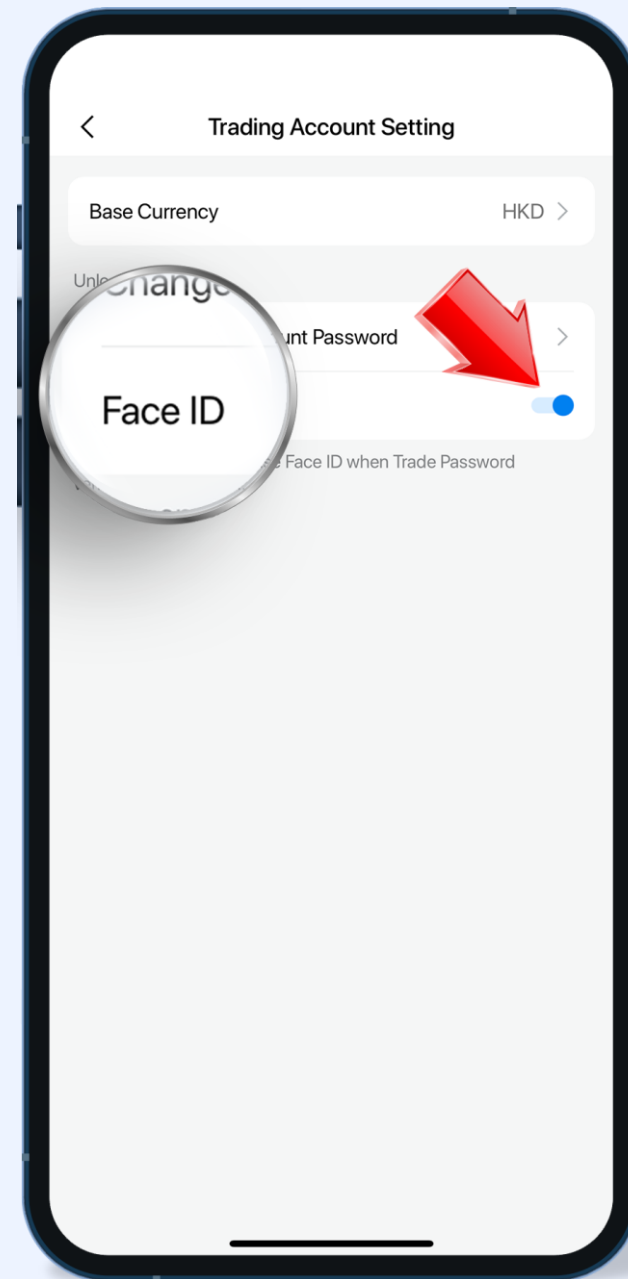
> Device Binding



## Me Page

※ In "Settings", click "Trading Account Setting", if your device supports "Face ID", push the button (arrow pointing right) to switch on the function.

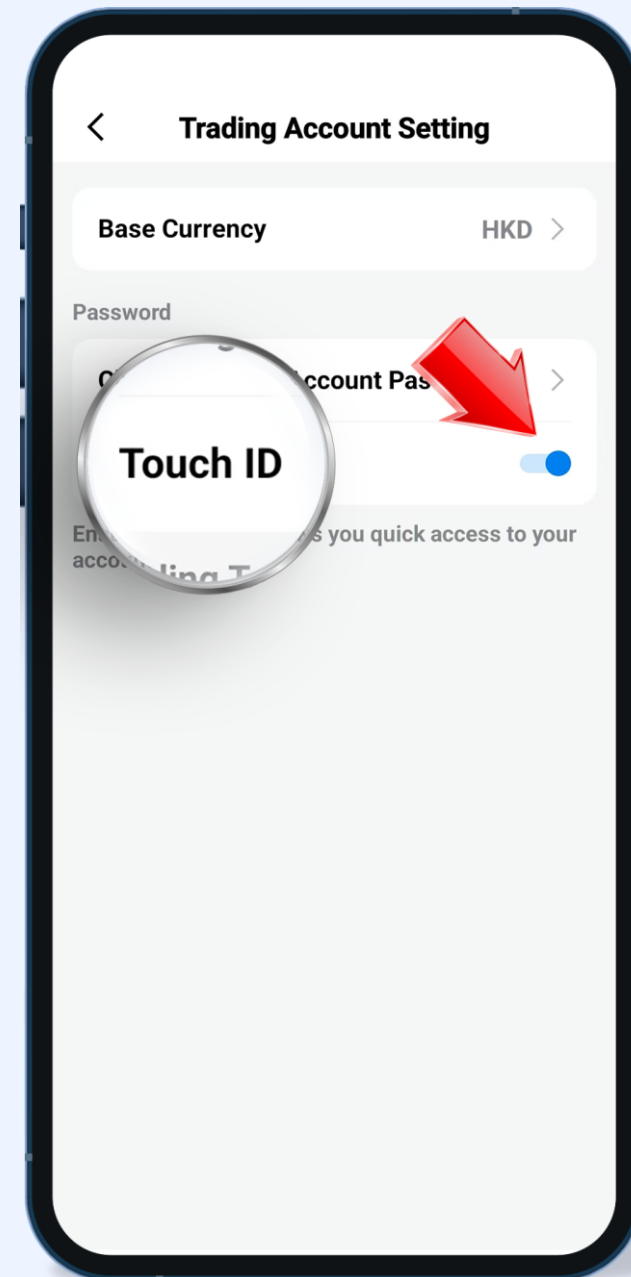
> Device Binding



## Me Page

✂ If your device supports "Touch ID", push the button (arrow pointing right) to switch on the function.

> Device Binding



Thank you.

