

1. This fund primarily invests in China A-Shares through a Renminbi Qualified Foreign Institutional Investors ("RQFII") quota of the RQFII Holder.
2. This fund's investments are concentrated in PRC., which may incur greater political, social, economic, tax, foreign exchange, liquidity and regulatory risks.
3. This fund invests in securities through RQFII which is subject to applicable regulations imposed by the PRC authorities. Although repatriation by RQFIIs are currently not subject to repatriation restrictions or prior approval, there is no assurance that PRC rules and regulations will not change or that repatriation restrictions will not be imposed in the future.
4. Investors may suffer great loss.

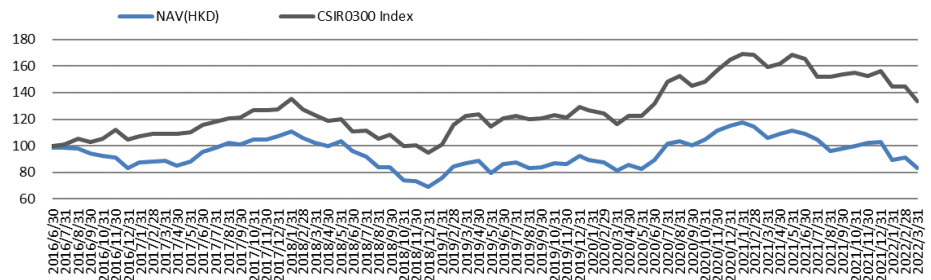
## Investment Objective

The Fund seeks to achieve long-term capital appreciation by investing in stocks issued by companies established and operating in the PRC and listed on stock exchanges in Shanghai and Shenzhen through the RQFII quota of the RQFII Holder which is the holding company of the Manager.

## Key Information

Fund Manager	Shenwan Hongyuan Asset Management (Asia) Limited
Portfolio Manager	Hayden Che Hao Nan
Base Currency	RMB
Launch Date	8-Jun-16
Unit NAV	Class A 83.04
Dividend Policy	No dividend distribution
Minimum Subscription	Class A: 10,000 (Initial) 5,000(Subsequent)
Bloomberg ISIN	Class A:SWRASHA HK Class A:HK0000263076
Subscription Fee	Up to 5%
Management Fee	1.5% p.a. 20% of the difference between the NAV per unit of the class on a valuation day and the high water mark *average number of units for Class A HKD units over the period
Performance Fee	Up to 1% p.a. (subject to a minimum monthly fee of USD4,000)
Trustee Fee	Up to 0.5%
RQFII Custodian Fee	Up to 0.5%
Switching Charge	Up to 1%
Redemption Fee	N/A
Administration Fee	N/A

## Fund Performance



## Sector Exposure (%)

Pharmaceuticals, Biotechnology	19.75%
Materials	16.01%
Food, Beverage & Tobacco	14.11%
Real Estate	6.89%
Energy	6.74%
Semiconductors & Semiconductor	6.47%
Consumer Durables & Apparel	5.27%
Banks	5.08%
Retailing	5.05%
Software & Services	4.94%
Cash	9.69%

## Top 5 Positions (%)

ZHEJIANG JIUZHOU PHARMACEU-A (603456 CH)	7.74%
KWEICHOW MOUTAI CO LTD-A (600519 CH)	7.04%
POLY DEVELOPMENTS AND HOLD-A (600048 CH)	6.89%
WENS FOODSTUFFS GROUP CO - A (300498 CH)	6.77%
LUXI CHEMICAL GROUP CO LT-A (000830 CH)	6.75%

## Cumulative Performance

Cumulative Return (Dividend re-invested)	YTD	1 Month	3 Months	6 Months	1 Year	3 Years	5 Years	Since Inception
Class A(HKD)	-19.15%	-9.00%	-19.15%	-15.32%	-21.47%	-4.82%	-6.23%	-16.95%
CSI 300 Index	-14.53%	-7.84%	-14.53%	-13.23%	-16.36%	9.05%	22.18%	33.46%