

1. This fund primarily invests in China A-Shares through a Qualified Foreign Investors ("QFI") status of the QFI Holder.
2. This fund's investments are concentrated in PRC., which may incur greater political, economic, regulatory, legal, foreign exchange and liquidity risks.
3. This fund invests in securities through the QFI which is subject to applicable regulations imposed by the PRC authorities. Although repatriation by QFIs are currently not subject to restrictions or prior approval, there is no assurance that PRC rules and regulations will not change or the repatriation restrictions will not be imposed in the future. In case of new repatriation restrictions on invested capital or profits, the ability may be compromised to meet the redemption.
4. Investors may suffer great loss.

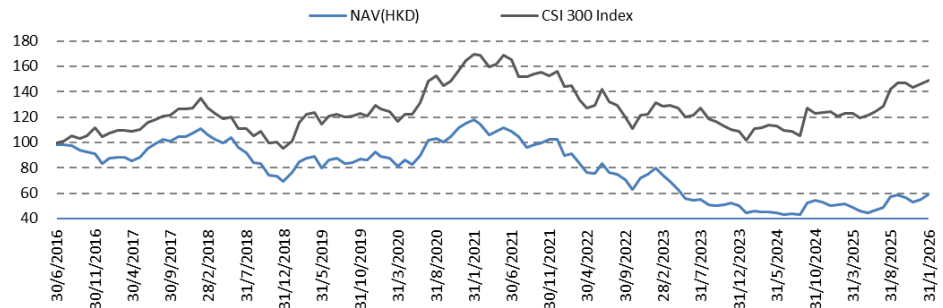
## Investment Objective

The Fund seeks to achieve long-term capital appreciation by investing in stocks issued by companies established and operating in the PRC and listed on stock exchanges in Beijing, Shanghai and Shenzhen and other eligible mainland China onshore markets through the QFI status of the QFI Holder which is the holding company of the Manager.

## Key Information

Fund Manager	Shenwan Hongyuan Asset Management (Asia) Limited
Portfolio Manager	Eric Cui Guoqiang
Base Currency	RMB
Launch Date	8-Jun-2016
Unit NAV	Class A HKD59.435
Dividend Policy	No dividend distribution
Minimum Subscription	Class A: 10,000 (Initial) 5,000(Subsequent)
Bloomberg ISIN	Class A:SWRASHA HK Class A:HK0000263076
Subscription Fee	Exempted temporarily
Management Fee	Exempted temporarily
Performance Fee	Exempted temporarily
Trustee Fee	Exempted temporarily
QFI Custodian Fee	Exempted temporarily
Switching Charge	Exempted temporarily
Redemption Fee	N/A
Administration Fee	N/A

## Fund Performance Since Inception



## Sector Exposure (%)

Non-bank Financials	21.57%
Basic Chemical	15.32%
Electronics	8.66%
Computer	7.95%
Coal Mining	7.88%
Media	7.48%
Healthcare	7.28%
Food & Beverage	5.75%
Nonferrous Metals	4.45%
Petroleum & Petrochemical	3.34%

## Top 5 Positions (%)

Wuxi NCE Power Co-A (605111 CH)	8.66%
Wanhua Chemical Group Co-A (600309 CH)	8.27%
Merit Interactive Co Ltd-A (300766 CH)	7.95%
China Shenhua Energy Co-A (601088 CH)	7.88%
37 Interactive Entertainment Network Tech-A (002555 CH)	7.48%

## Cumulative Performance

	Cumulative Return (Dividend re-invested)	YTD	1 Month	3 Months	6 Months	1 Year	3 Years	5 Years	Since Inception
Class A(HKD)		8.44%	8.44%	4.72%	21.22%	16.84%	-25.35%	-49.52%	-40.56%
CSI 300 Index		1.65%	1.65%	1.42%	15.48%	23.30%	13.22%	-12.06%	48.75%

## Warning Statement

This Document is for information purpose only and does not constitute a prospectus, an offer or an invitation to subscribe any securities, or a recommendation in relation to any securities. Investment involves risks. Investors should not make investment decisions based on this material alone; before making any investment decision, investors should carefully read the explanatory memorandum and the product key facts statement of the Sub-Fund for further details including the risk factors. Past performance information presented are not indicative of future performance. Though the Sub-Fund has been authorized by the Securities and Futures Commission of Hong Kong, such authorization does not imply official recommendation. The Sub-Fund may not be suitable for individual investor and may not be suitable for everyone. Information contained in this report has been obtained from sources believed to be reliable but Shenwan Hongyuan Asset Management (Asia) Limited does not guarantee the accuracy and completeness of the information provided by third party. This material has not been reviewed by the Securities and Futures Commission of Hong Kong.  
Issued by: Shenwan Hongyuan Asset Management (Asia) Limited.